



Llantilio Pertholey Church in Wales Primary

Dear Parents and Carers,

Happy New Year! I hope that you and your families have all enjoyed your Christmas breaks.

As you know, schools in Wales have been moved to a **Very High Level** of risk for COVID-19. All schools have had 2 days to prepare for the safe return of children and staff to school.

We are working closely with schools across Monmouthshire, the LA and following WG Guidance to ensure that our school is open safely.

Newsletter
5th
January

Follow [us](#) on
TWITTER

CLICK HERE

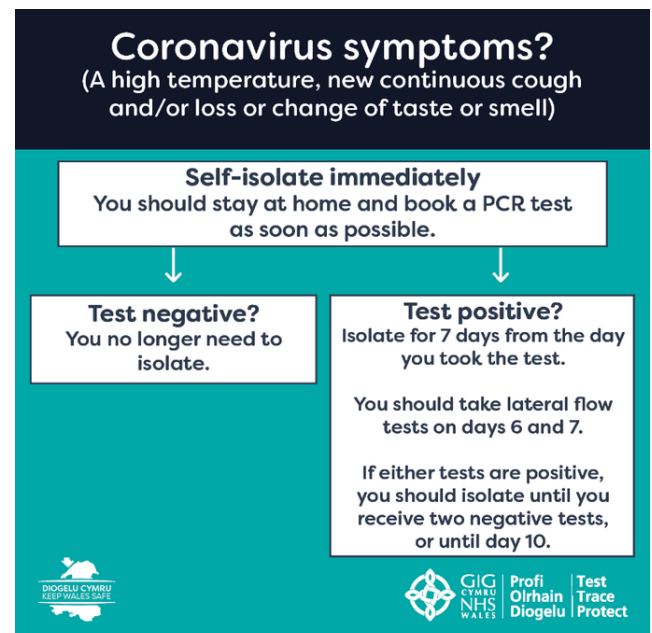
One of my roles has been to re-consider and update the school's risk assessment. This is available on the school website [covid-19 information \(llantiliopertholeyvc.monmouthshire.sch.uk\)](https://llantiliopertholeyvc.monmouthshire.sch.uk). In line with guidance, with Governors and staff, I have considered the balance of benefits and risks to learners and staff using the guiding principles:

- ◆ enable school to continue to offer as wide a range of support and experiences as possible, including the provision of free breakfast and after school clubs and practical subjects
- ◆ secure the best outcomes for all learners by considering both their educational needs and wellbeing
- ◆ manage ongoing risks of COVID-19 as safely as possible as for other infections, and ensure clarity of actions required if there is a case in a school.

The virus is spreading rapidly in Wales and Monmouthshire. We must all try to help stop the spread by following the [Welsh Government guidance for self-isolation](#).

Staff and learners should not attend school if they have any COVID-19 symptoms. If a staff member or learner becomes symptomatic they should get a test as soon as possible, and self-isolate until the outcome of the test, if the test is negative they can leave self-isolation. [Further guidance](#) is available.

If we do have cases in school we will inform you as necessary and follow the WG guidance to reduce the risk of spreading it.



Contact us: 01873 853746
email: llantiliopertholeyprimary@monmouthshire.gov.uk



We will continue to follow advice and have regular handwashing throughout the day and promote 'Catch it, Bin it, Kill it' with the children for sneezes and coughs. These are key interventions to prevent spread and manage outbreaks.

Windows in classrooms will be open to ensure rooms are well-ventilated. We have carbon dioxide monitors in all classrooms to monitor air quality in each room.

Maintaining appropriate levels of cleaning is important. If there is a number of confirmed cases in a class in the school a deep clean of the area will be undertaken.

We have planned to stagger lunchtime in school in order to be able to offer the full winter menu in the hall. Tables will be placed 2 metres apart and children from only one class will be on any given table. The tables will be cleaned in between classes and we will limit the number of children in the hall. Children will eat packed lunches in their classroom.

We will continue to have separate areas on the yard for Key Stage 2 and re-introduce it for Foundation Phase for Year 1 and 2. Reception class will have a separate playtime.

For the time being we will be reintroducing staggered exit and entry times as below. The school day will be timetabled for the same amount of teaching time. **PLEASE BE PROMPT** with your timings and leave the school site as soon as possible. Please do not arrive on the school site more than 5 minutes before your allocated time. **If you have more than one child in school please use the earlier time slots for drop off and pick up times.** Siblings will come out of school at the same time. Please collect any younger children on the FP yard first and then go to the KS2 yard to collect older children.

I would ask all parents to support us by continuing to wear a mask on the school site (including outdoors). Also, please ensure that you stay 2m away from each other on the school premises. KS2 children should be dropped off at the school gate in the morning. In the afternoon, could parents please stand next to the sign on the yard depicting their child's year group i.e 3,4, 5 or 6) to support social distancing. The teacher will bring the children to that area. I would ask that only one adult comes to collect children to keep numbers down. Thank you for understanding.

	Drop Off Time	Pick Up Time
Reception	8.40	3.00
Year 1	8.50	3.10
Year 2	9.00	3.20
Year 3	8.40	3.00
Year 4	8.50	3.10
Year 5	9.00	3.20
Year 6	9.10	3.30

Contact us: 01873 853746
email: llantiliopertholeyprimary@monmouthshire.gov.uk



Breakfast Club and After School Club will continue at the normal times. We will separate Foundation Phase and Key Stage 2 children in the morning due to numbers of children attending Breakfast Club.

Please make sure that children have coats and appropriate footwear in school as we will use our outdoor spaces as much as we can. Please leave bags at home unless it is absolutely necessary. Children should not bring anything from home such as stationery or toys.

Reading books and resources that are sent home for learning will be isolated for at least 48 hours before being passed onto the next child.

Please make sure that we have up-to-date contact details for you. It is really important that we are able to contact you or other contacts during the school day. We may need to contact you quite urgently if your child is feeling poorly.

If your child is not in school because they are poorly please call and leave a message. We are obliged to call the parents or carers of any child not in school on the first day of their absence, if we do not have a reason for that absence. At times this can be an arduous task if we have a number of children absent at the same time without phone calls. Leaving a message will make life easier for the office administrators and ensure that they are not disturbing your day.

Please note that the answer phone is **continually monitored** throughout the day. From time-to-time, the administration staff have to leave the office for a few minutes, and the answer phone will be switched on. We have a new phone system which sends your message as an email straight away so we will get it and respond accordingly.

Please do not come inside the building unless absolutely necessary. Please email or call the office if you are able.

Over the next few weeks, children may be asked to complete homework at home. We are hoping that we will not have to close a class or the school. However, we need to have plans in place in case. We are planning to use Google Classrooms for our KS2 pupils which will enable teachers to feed back on work much easier. We want to ensure that KS2 children are able to use it at home and iron out any issues before any closures take place.

If a class is closed, work will be planned and distributed for those who are well enough to complete it. **Please let the school know if your child does not have access to a device that they could use at home.** A phone is not ideal. We may be able to support you with an old device for you to borrow if needed.

If a child is absent for COVID reasons but is an isolated case, the website will have work on it. The children will prepare new topic ideas, with their class teacher, over the next days. These will be displayed on the website. There are also pointers to many websites across a broad spectrum of subjects to keep your child learning and occupied. You will also find reading books that we have scanned in for your use at home.



We hope that we are looking at the worse case scenario and that these things do not happen. Information will always be distributed 3 ways:

- SCHOOP (ask the office or go to the website for instructions of how to sign up)
- TWITTER (@LPCommunity_)
- WEBSITE (www.llantiliopertholeyvc.monmouthshire.sch.uk)

I have heard that some parents have been using social media over the past couple of days as they were unsure of the arrangements for the immediate start of the term. The information is there, if you know where to look.

Please note that we had planned an INSET day at the beginning of this term. This has now been moved to **Friday 21st January**.

Have you seen the Christmas Concerts on our website?

They are all out of this world!!

Please click here to see them:

[CHRISTMAS | Lpps \(llantiliopertholeyvc.monmouthshire.sch.uk\)](http://www.llantiliopertholeyvc.monmouthshire.sch.uk)



Thank you for taking the time to read through this newsletter. These are always uploaded onto the school website.

Thank you for supporting me, and the staff, to keep our school community safe.

God Bless



<u>Dates for Your Diary</u>	
6th January:	Start of Spring Term for children
21st January:	Teacher Training
21st February-25th February:	Half Term
28th February:	Teacher Training
8th April:	End of Term
25th April:	Start of Summer Term
Monday 3rd May:	May Day
30th May-3rd June:	Half Term
6 th June:	Teacher Training
27th June:	Extra holiday for Jubilee
1 st July:	Teacher Training
20th July:	End of Summer Term
2nd September:	Training Day
5th September:	Start of Autumn Term for children