



Biff, Chip and Kipper Stories



Oxford Reading Tree

Oxford Level 7

Book Band 7 Turquoise

# 5 The Willow Pattern Plot



The magic takes the children into the willow pattern.



Biff, Chip and Kipper Stories Level 7 Stories

- 1 Red Planet
- 2 Lost in the Jungle
- 3 The Broken Roof
- 4 The Lost Key
- 5 The Willow Pattern Plot
- 6 Submarine Adventure

© Australia: Extending Levels 18-19

**OXFORD**  
UNIVERSITY PRESS

How to get in touch:  
**web** www.oxfordprimary.co.uk  
**email** schools.enquiries.uk@oup.com  
**tel.** +44 (0) 1536 452610  
**fax** +44 (0) 1865 313472

ISBN 978-0-19-848310-6



9 780198 483106

# The Willow Pattern Plot



Series created by Roderick Hunt and Alex Brychta



Written by Roderick Hunt

Illustrated by Alex Brychta

Llantilio Pertholey Primary School  
Hillgrove Avenue, Mardy, Abergavenny  
Telephone: (01873) 853746

### BEFORE READING

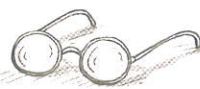
#### Talk together

- Look at the cover and read the title together. Turn to page 2 to show your child what a willow pattern plate looks like.
- Point out the word *plot* and explain that it means a secret plan.
- Look through the book and talk about the pictures.

#### About the words in this book

- Your child will probably be able to read most of the words in this book. Encourage your child to sound out and blend any challenging words, such as those below. If necessary, model the blending or read the words for your child.

water bought cruel  
friends guards listen



See the inside back cover  
for more ideas.

### DURING READING

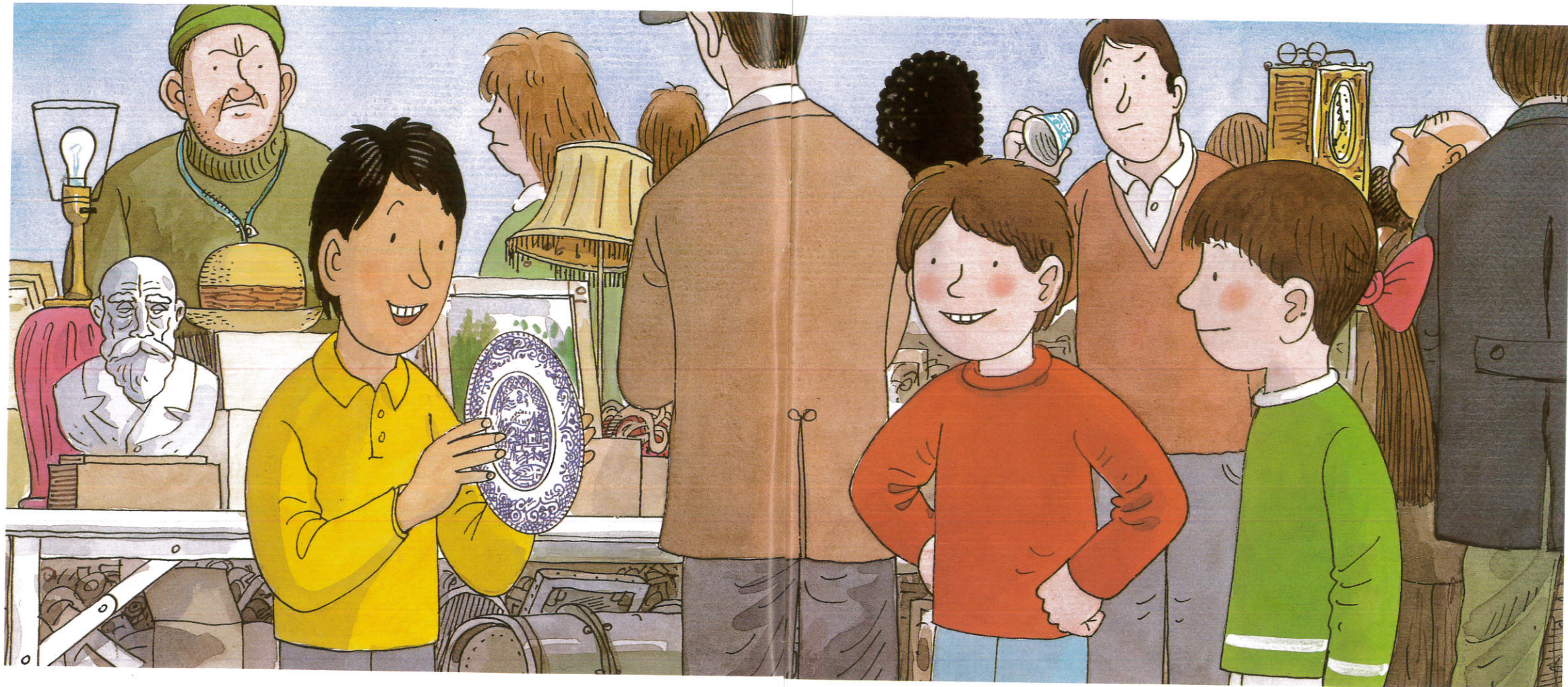
Enjoy the story together.  
If your child needs support to read the story:

- Remind your child to blend unfamiliar words from left to right.
- If a word is still too tricky, simply say the whole word for your child.
- Re-read sentences to focus on their meaning where necessary.



Biff and Chip were at a car boot sale.  
They saw Nadim.

“Nadim! Over here!” called Biff.  
Nadim ran to see them. He had bought  
something at the sale.



It was a blue and white plate. He showed it to Biff and Chip.

“It’s a present for my mum,” said Nadim. “It’s a willow pattern plate. My mum collects them.”

“Why is it called a willow pattern plate?” asked Chip.

“I don’t know,” said Nadim, “but I think the pattern tells a story.”

“I wonder what the story is,” said Biff.



Mum and Dad looked at Nadim's plate.  
"It's a present for my mum," said  
Nadim.  
Biff asked if Nadim could come and play.  
So Nadim went to play with Biff  
and Chip.



They went up to Biff's bedroom.  
"What shall we play?" asked Nadim.  
"I don't know," said Biff.  
Suddenly, the key began to glow.



The magic took the children into a new adventure.

"What's happening?" called Nadim.

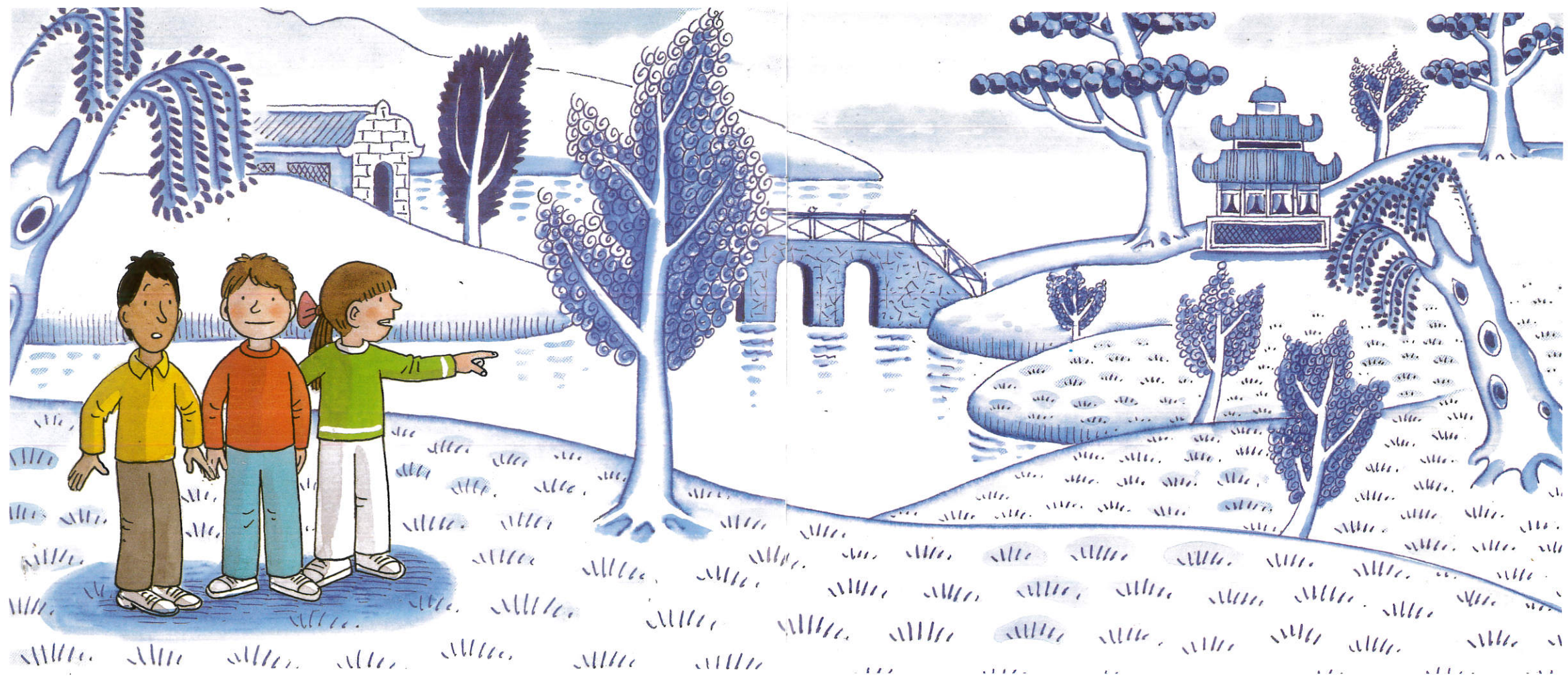
"Help!" said Biff. "Everything is going blue!"



"What a strange place!" said Chip.

"What strange trees!"

"Everything looks blue and white," said Nadim. "We're in the land of the willow pattern."



They were in a big garden. It had a high wall all around it and blue trees grew everywhere.

“I can see water,” said Biff. “Is the garden next to the sea?”

“No, it’s next to a lake,” said Nadim.  
“There’s a bridge,” said Biff. “It’s like the one on the plate.”

“I can see a little house down by the water,” said Chip.



Down by the lake they saw a girl. She was all alone.

“She looks unhappy,” said Biff. “Why is she all alone and why is she crying?”

The girl was called Kim Shee. She lived in the little house by the lake. She had a cruel father. He would not let her go out of the garden.

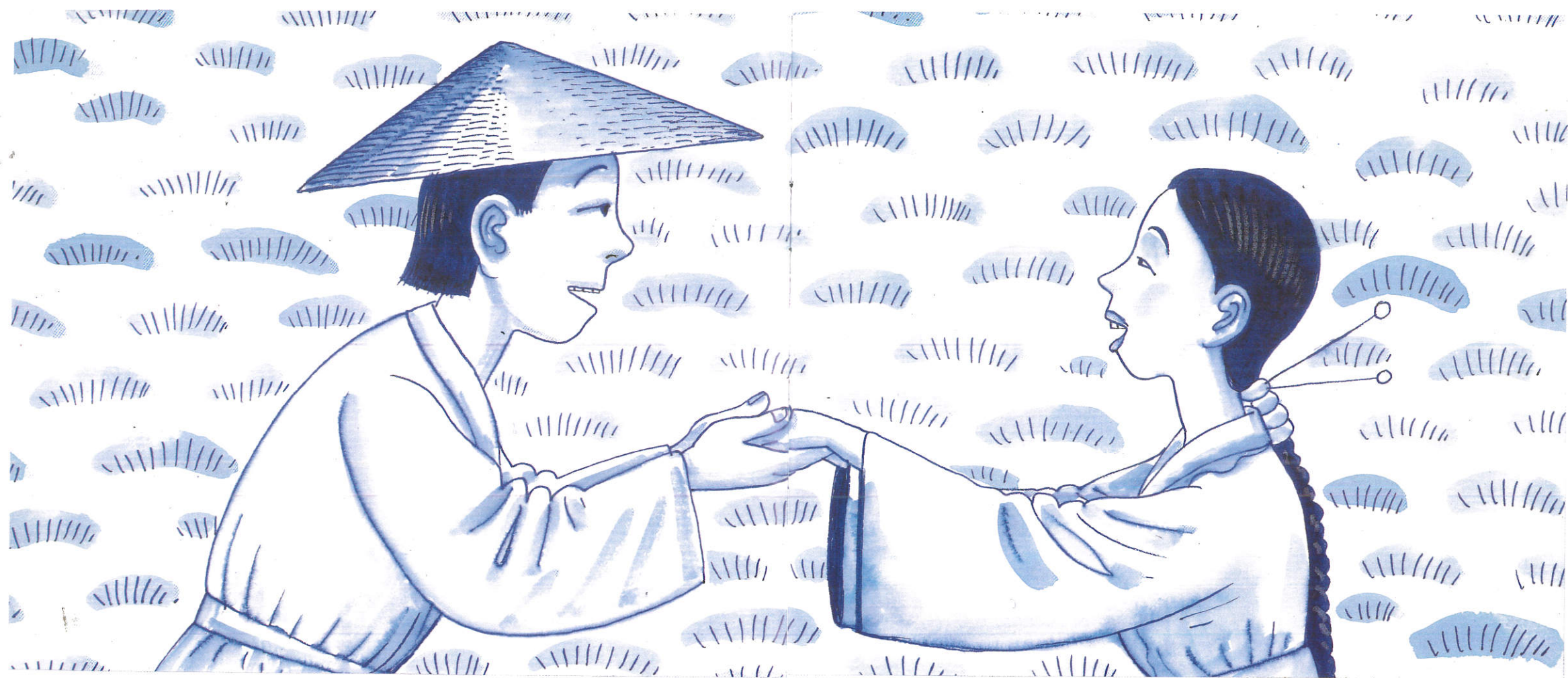


Kim loved a boy called Chang. She wanted to marry him. But Chang was too poor. Kim's father wanted her to marry a rich man, but Kim loved Chang.



Kim Shee heard Chang calling, "Kim Shee," he called. "Are you alone?" "Chang!" said Kim. "How did you get here?" "I swam across the lake," said Chang. "Nobody saw me."





“Oh!” said Kim. “You are cold and wet.”

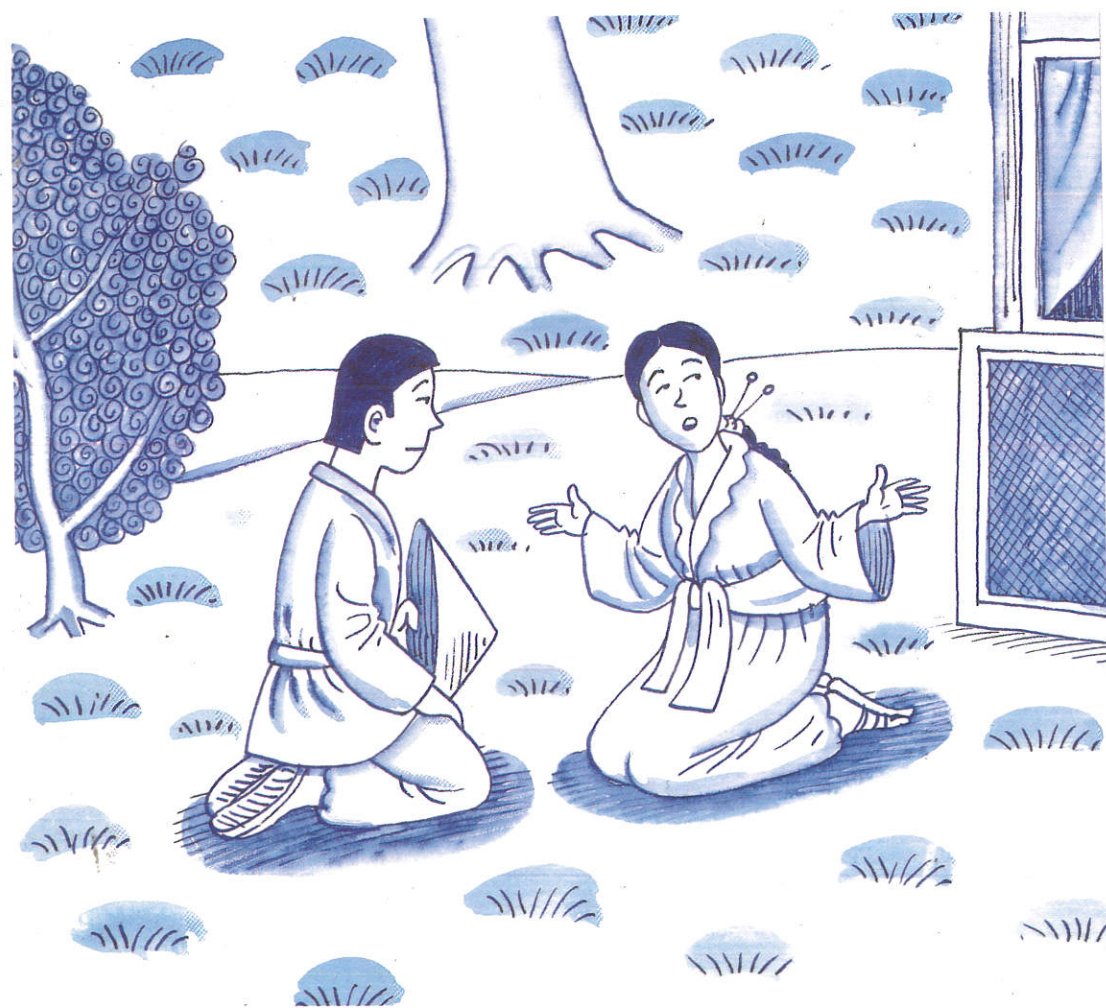
“It does not matter,” said Chang. But Kim Shee was afraid.

“You must go away,” she said. “My father must not see you here.”

“This garden is like a prison,” said Chang. “Your father never lets you go out.”

“But what can we do?” asked Kim.

“We must run away,” said Chang. “Then I can marry you.”



“But how can I leave the garden?” asked Kim. “There are guards everywhere.”

“Don’t worry,” said Chang. “I will think of something.”



Kim heard the sound of a twig snapping.

“Someone is watching us!” she gasped. Chang jumped to his feet. He held up a stick.

“Who is there?” he called.



Then they saw Biff, Chip and Nadim.  
“Don’t be afraid,” said Biff. “We are friends.”

“We have never seen children like you before,” gasped Chang. “How did you get into this garden?”

“We didn’t mean to listen,” said Chip, “but we heard what you were saying.”

“We know you want to run away,” said Biff.

“But how can we?” asked Kim. “There are guards all round the garden.”



Nadim had a good idea. He told them what it was.

"It's a brilliant idea!" said Chip.

"I'm sure it will work," said Biff.

"But what if we are caught?" asked Chang.

"Do you have a better idea?" asked Biff.

"No," said Chang. "It is our only chance."

"First, you must hide," said Nadim.

"Then, be ready to run over the bridge," said Chip.



“Now we must get ready,” said Nadim.  
Kim had a long sash round her waist.  
“Give me your sash, Kim,” said Biff.  
Kim gave Biff her sash. Biff tied Kim’s sash to the bridge.



There were lemon trees in the garden.  
Nadim and Chip climbed into one. They  
picked as many lemons as they could.  
Then they waited.



Kim and Chang hid by the bridge.  
Biff held on to the end of the sash.

"I hope Nadim's idea works," she  
thought. Nadim called from the tree.

"Willow Pattern Plot – begin!" he  
said.



Chip and Nadim began to shout at  
the guards.

"Come and get us!" they yelled.  
"We're over here."

The guards ran into the garden. They  
ran towards Kim Shee's little house.



Now that the guards were in the garden, Kim Shee and Chang could escape. Someone else ran into the garden.

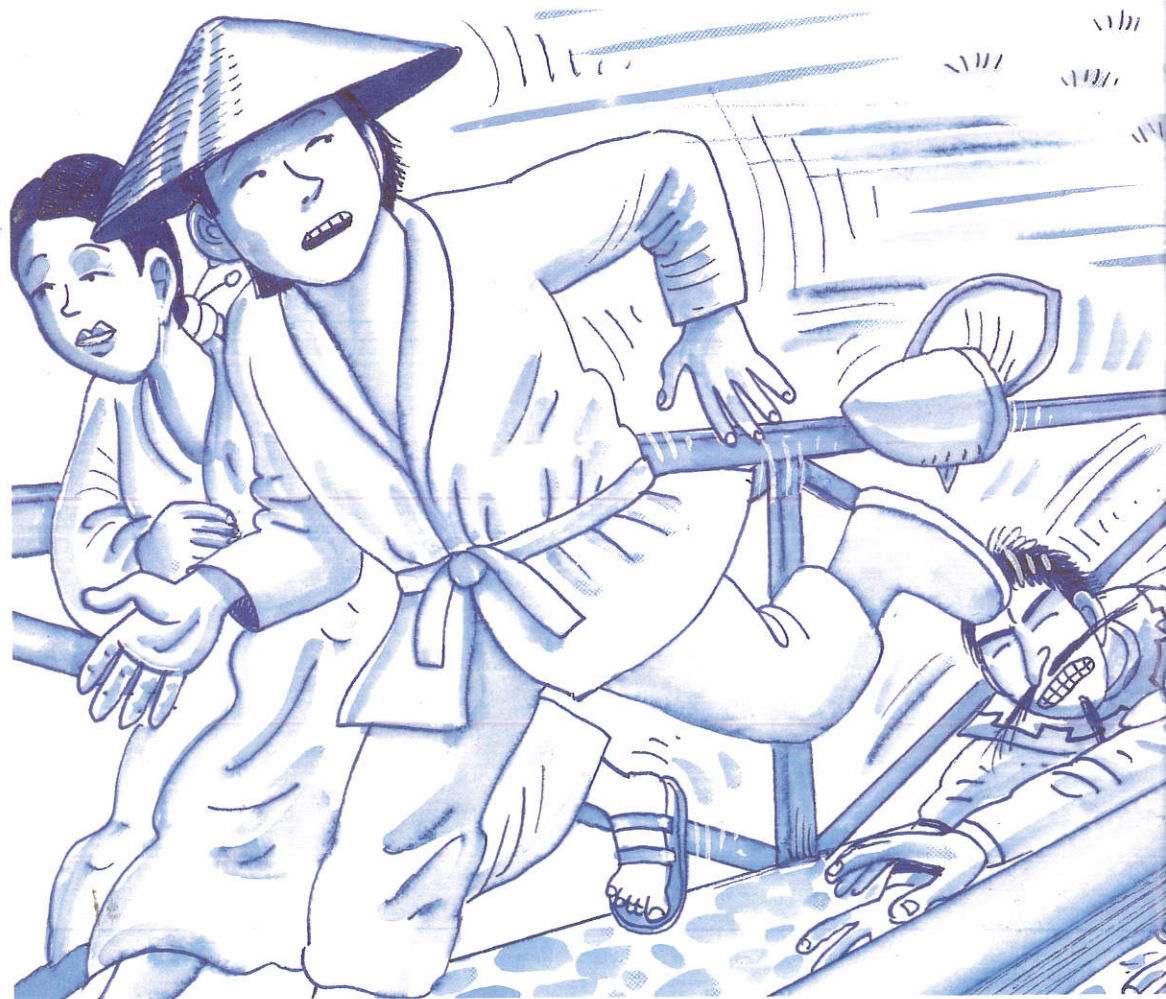
"My father is coming!" gasped Kim Shee.



Kim and Chang began to run, but the guards saw them.

"Stop them!" shouted Kim Shee's father.

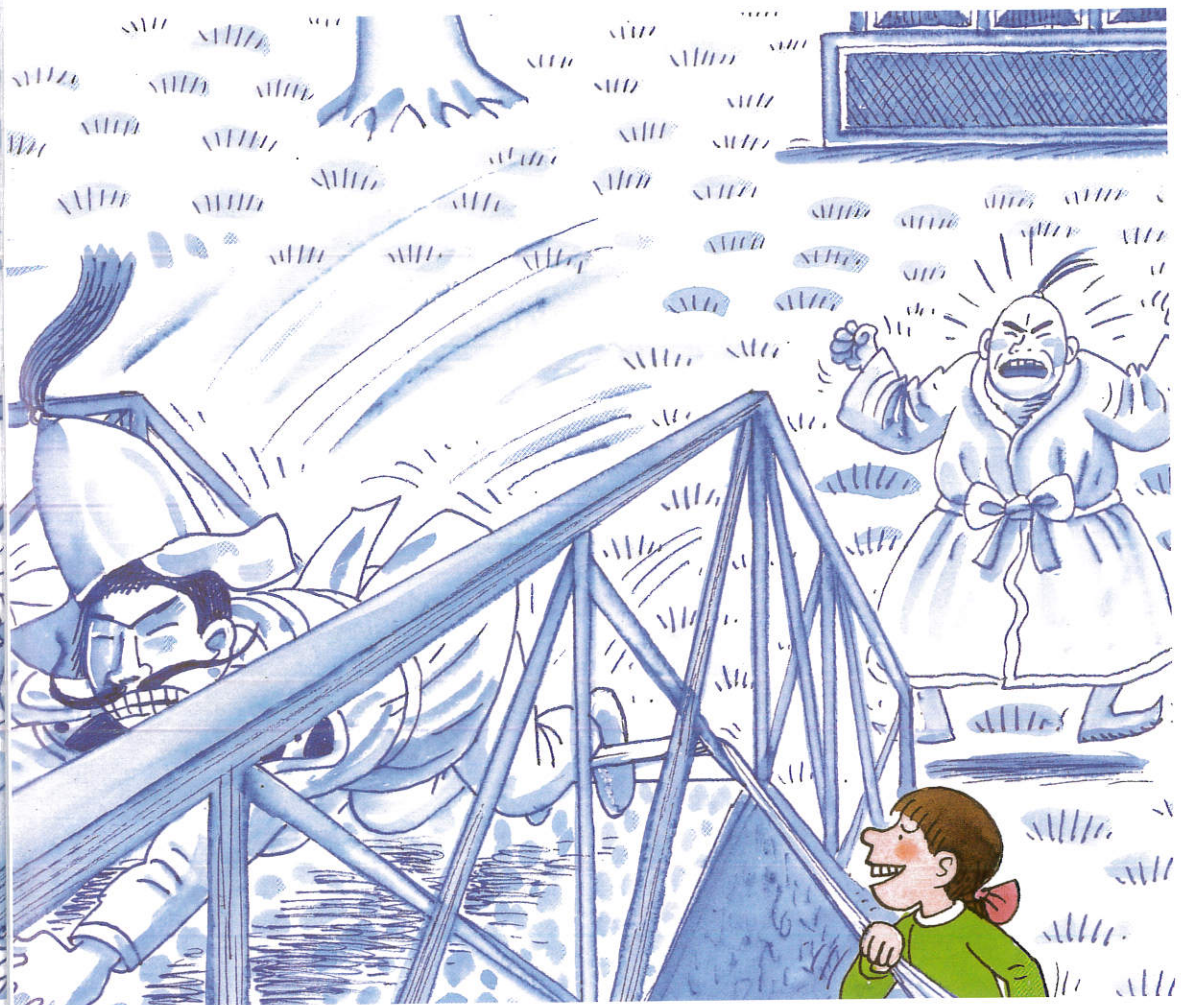
Nadim and Chip threw the lemons at the guards.



Chang and Kim Shee ran over the bridge. The guards chased after them. Biff got ready.

"I hope Kim's sash is strong!" she said.

The guards ran onto the bridge.



Biff pulled the sash tight. The guards tripped over it. They fell over with a crash.

"You fools!" shouted Kim Shee's father.





Chip and Nadim climbed down from the lemon tree. They ran across to find Biff. Kim Shee's father saw them.

"Catch those children," he yelled.



"Well done, Biff!" said Chip. "Kim and Chang have got away!"

"I hope we get away, too," said Biff. The magic key was glowing.

"Hooray! It's time to go!" she said.



“What an adventure!” said Chip.  
Nadim picked up his plate and looked  
at it.

“I wonder what happened in the real  
willow pattern story,” he said.

#### AFTER READING

- Re-read page 12. Ask: *Why did Kim's father want her to marry a rich man?*
- Ask: *What would have happened if the children hadn't been able to save Kim and Chang?*
- Find *crash* on page 29. Ask your child to use the letters to spell other words (e.g. *car, ash, rash*).

Text © Roderick Hunt 2002  
Illustrations © Alex Brychta 2002

First published 2002

This edition published 2011

ISBN 978-0-19-848310-6

All rights reserved. Photocopying of this  
book is prohibited.

20 19 18 17 16 15 14

Printed in China by Imago

Paper used in the production of this book  
is a natural, recyclable product made from  
wood grown in sustainable forests. The  
manufacturing process conforms to the  
environmental regulations of the country  
of origin.

**Oxford  
OWL**

**For teachers**  
Helping you with free eBooks, inspirational  
resources, advice and support

**For parents**  
Helping your child's learning  
with free eBooks, essential  
tips and fun activities



[www.oxfordowl.co.uk](http://www.oxfordowl.co.uk)